

2023 California County Scorecard of Children's Well-Being

How to Find & Use the Data You Need

A comprehensive picture of children's health, education, and welfare in every one of California's 58 counties.

February 7, 2023



- (1) Overview of the Scorecard and demonstration
- (2) Snapshot of statewide demographics
- (3) Challenges and bright spots in the data
- (4) DataQuest demonstration
- (5) Questions

Scorecard Demonstration

scorecard.childrennow.org

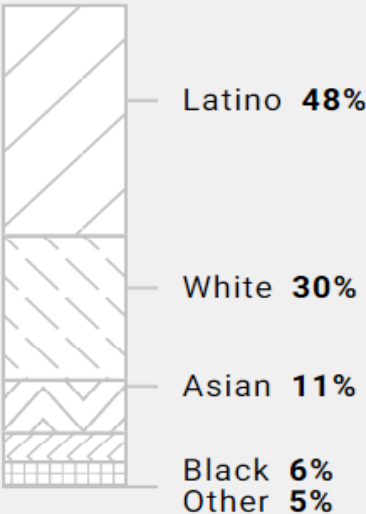
Data on well-being of California's kids

Most Recent State Demographics

13.5 million children/youth live in California

8.89 million ages 0 to 17

4.64 million ages 18 to 25



172,000 students experiencing homelessness

4,028,648 children with at least one immigrant parent

10% youth who identify as LGBTQ

38% children at or below 2x the poverty level

Biggest challenges (statewide):



education

- ▶ College math readiness (27%)
- ▶ 8th grade math (29%)
- ▶ 5th grade science (31%)
- ▶ 3rd grade reading (42%)



health

- ▶ Teens with HPV vaccination (30%)
- ▶ Children in Medi-Cal with dental visits (34%)
- ▶ Children in Medi-Cal with preventive check-ups (42%)
- ▶ Kindergarteners with routine immunizations (94%)

Biggest challenges (statewide):



child welfare

- ▶ 8th grade foster youth math (8%)
- ▶ 3rd grade foster youth English Language Arts (18%)
- ▶ Exits to permanency within a year (33%)



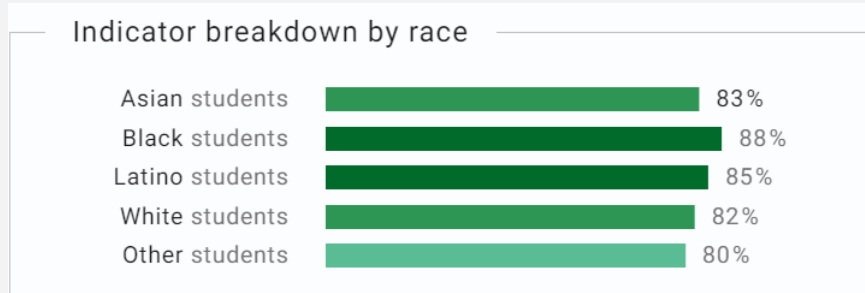
early childhood

- ▶ Children with working parents with a licensed child care space available (25%)
- ▶ 3- & 4-year-olds in preschool or Transitional Kindergarten (48%)

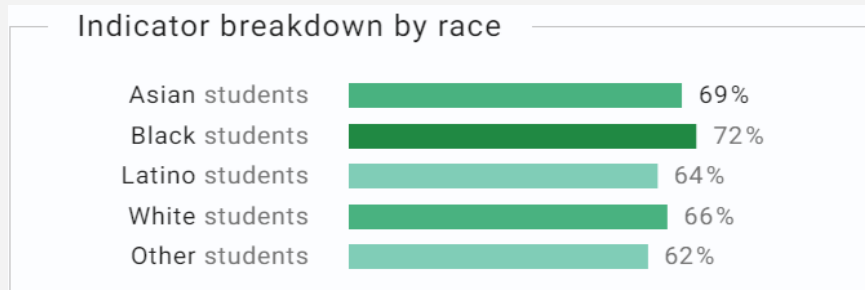
Data on well-being of California's kids -- *Disaggregated*

A focus on mental health

- Students who did not consider suicide (84%)



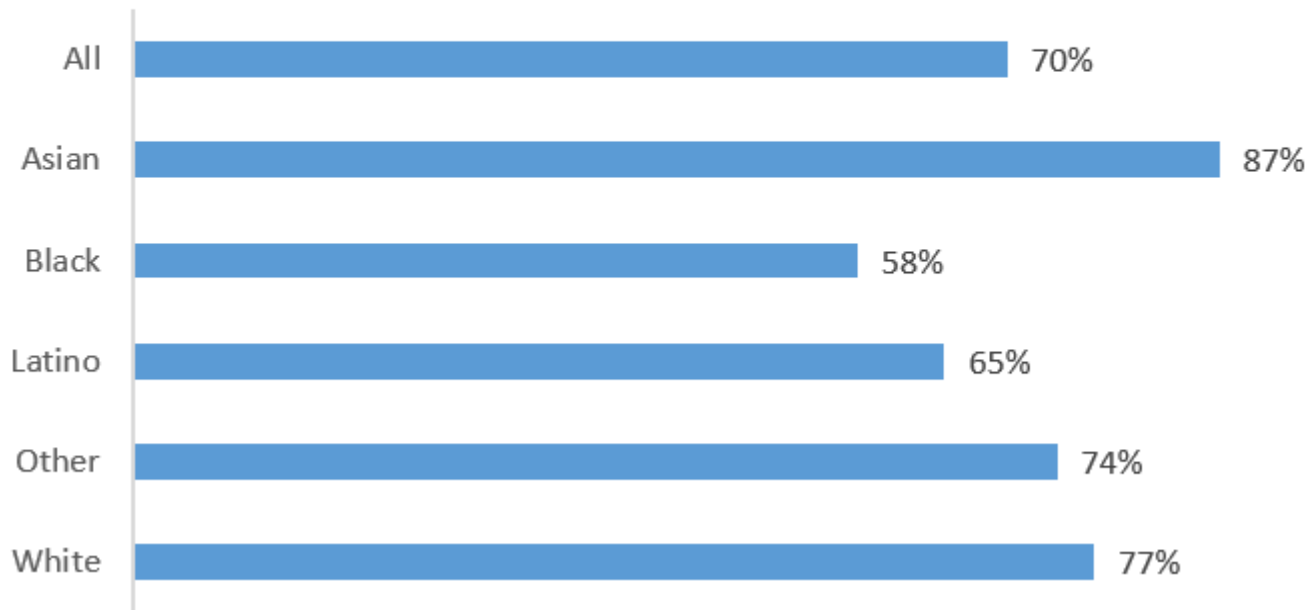
- Students who did not report feelings of chronic sadness or hopelessness (65%)



Racial and Ethnic Disparities:



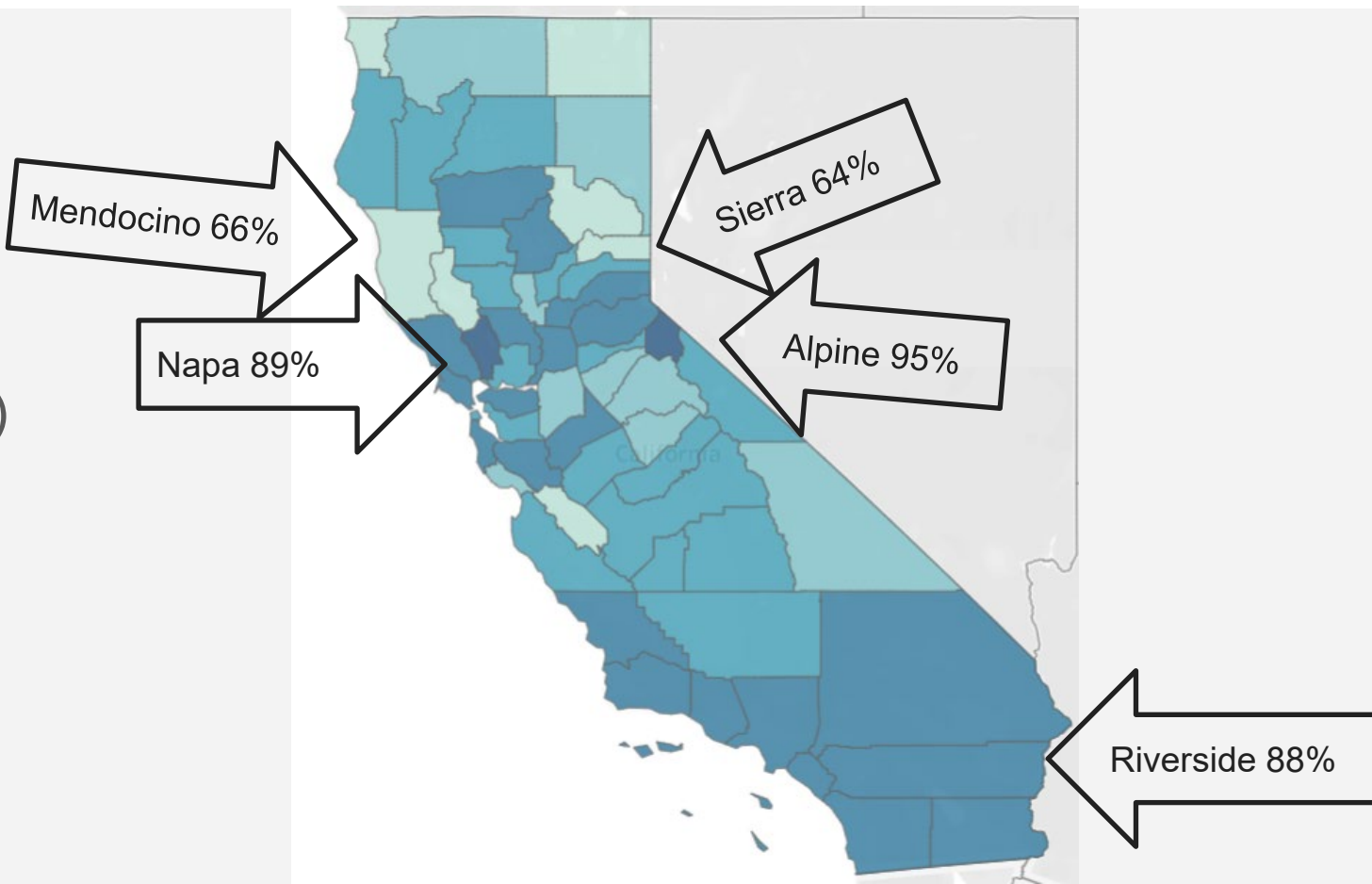
Students who were not chronically absent from school, 2022



Geographic Disparities:



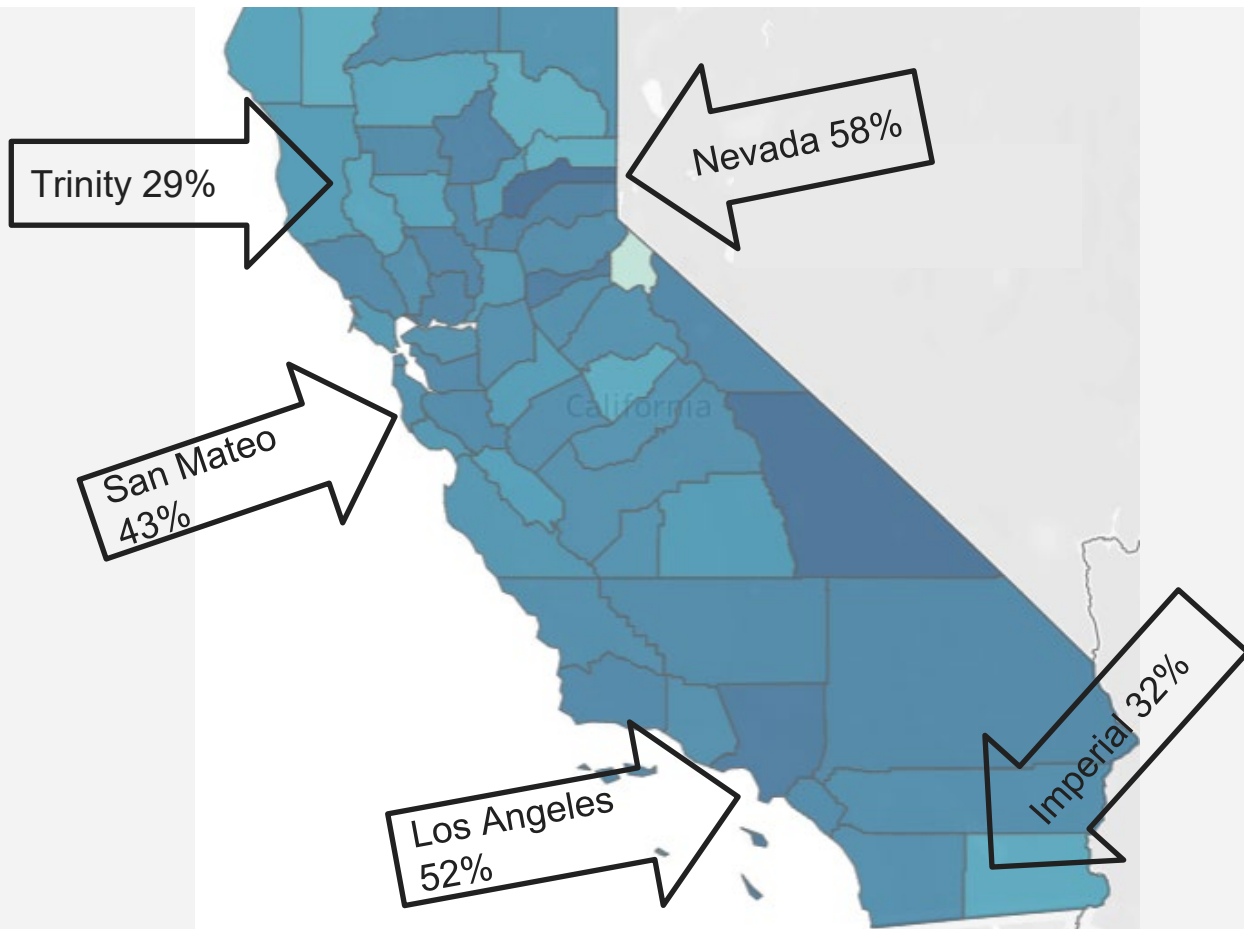
Fully qualified
teachers
(83% average)



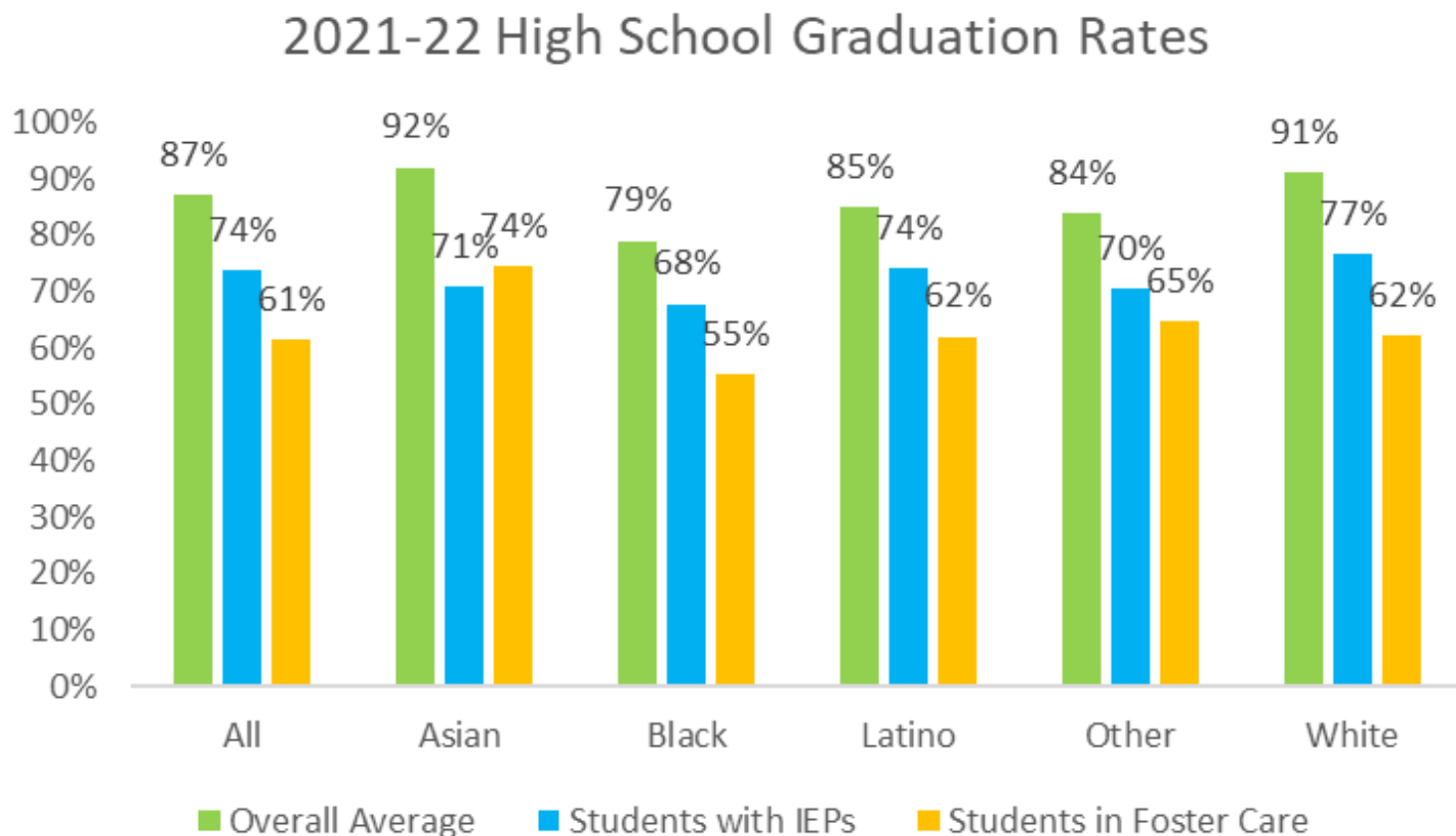
Geographic Disparities:



English learners who gained proficiency in English (46% average)



Intersectional Disparities:



Bright spots (statewide):



child welfare

- ▶ Children placed in family-like settings (84%)
- ▶ Children in foster care in 1 or 2 placements after 24 months in care (62%)



early childhood

- ▶ Newborns who are not low birthweight (93%)
- ▶ Pregnant people receiving prenatal care beginning in the first trimester (86%)

Bright spots (statewide):



education

- ▶ Suspensions NOT due to “defiance” (93%)
- ▶ High school graduation (87%)



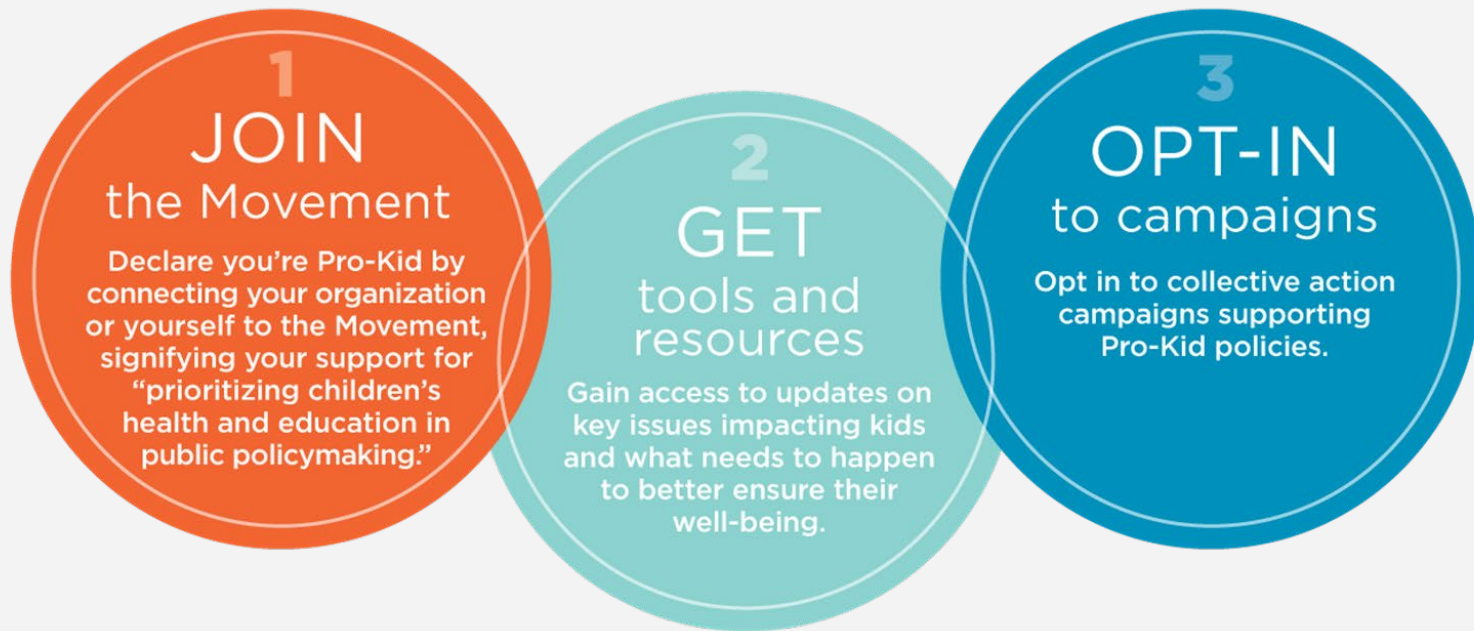
health

- ▶ Children with health insurance (97%)
- ▶ CalFresh access for low-income kids (89%)

DataQuest Demonstration

<https://dq.cde.ca.gov/dataquest/>

How do we USE this data to improve the lives of kids?
Give kids power through The Children's Movement:



www.childrennow.org/tcm

Questions?

How can this information help you
support kids in your community?

More Questions?

Kelly Hardy

Sr. Managing Director, Health & Research

Jurnee Louder

Assistant, Research

researchmail@childrennow.org